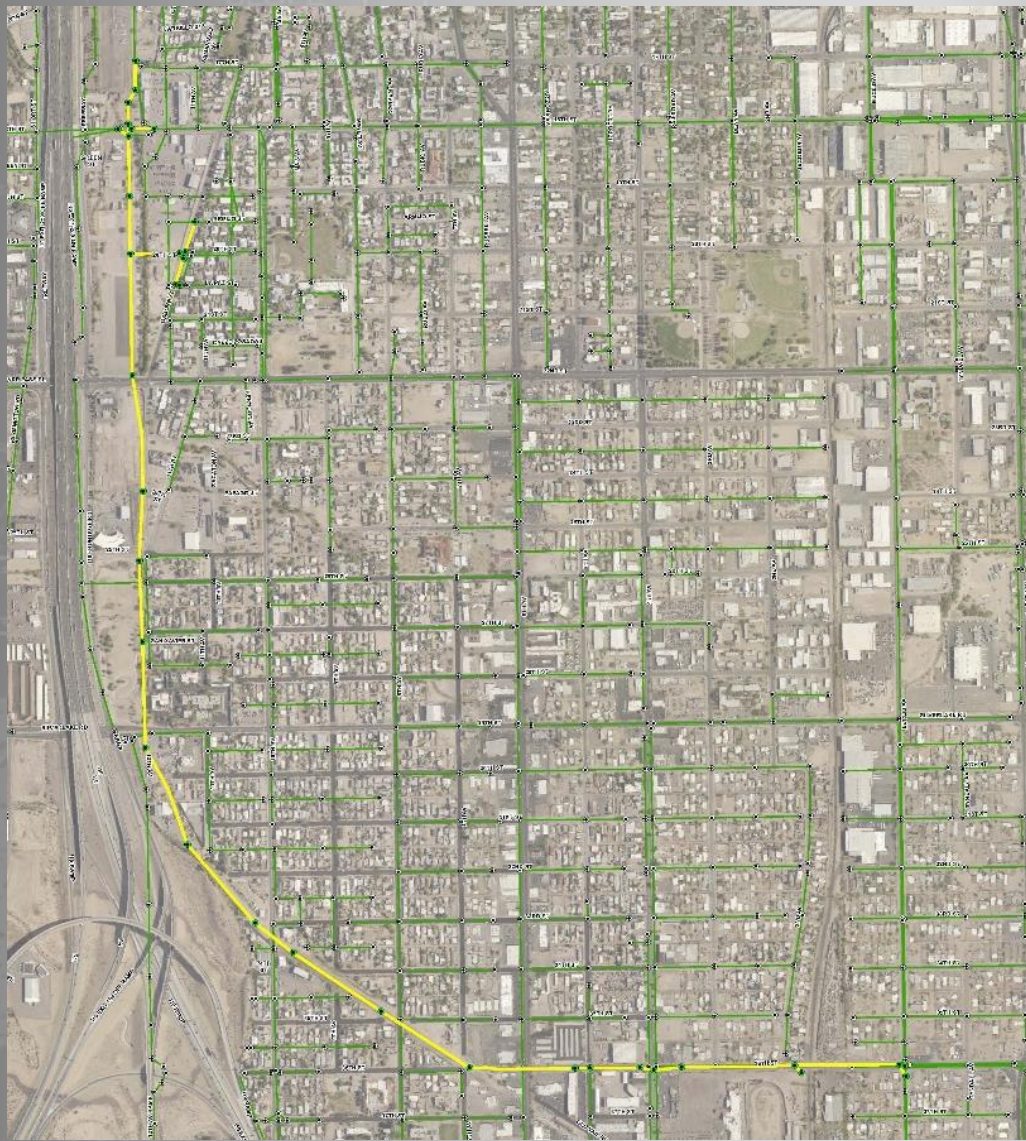


SLOPE  
2%



SEWER  
1:23  
1:24

EXISTING 54"Ø RCP  
IN V. EL. = 2381.712381.87  
(PRIOR TO CIPP)





# KE&G Construction, Inc.

Construction Manager at Risk Services  
for  
Southeast Interceptor Sewer Augmentation  
Business / Residence Open House



# Introductions

- Brian Janski– KE&G Project Manager/Estimator
- Cody Sauer– KE&G Project Engineer
- Craig Cannizzaro – Westland Resources
- Glen Peterson– Pima County
- Kathy Jirschele – Kaneen Advertising & Public Relations
- Kristi Shepherd – Kaneen Advertising & Public Relations

# What is the Project?

## Main Tasks

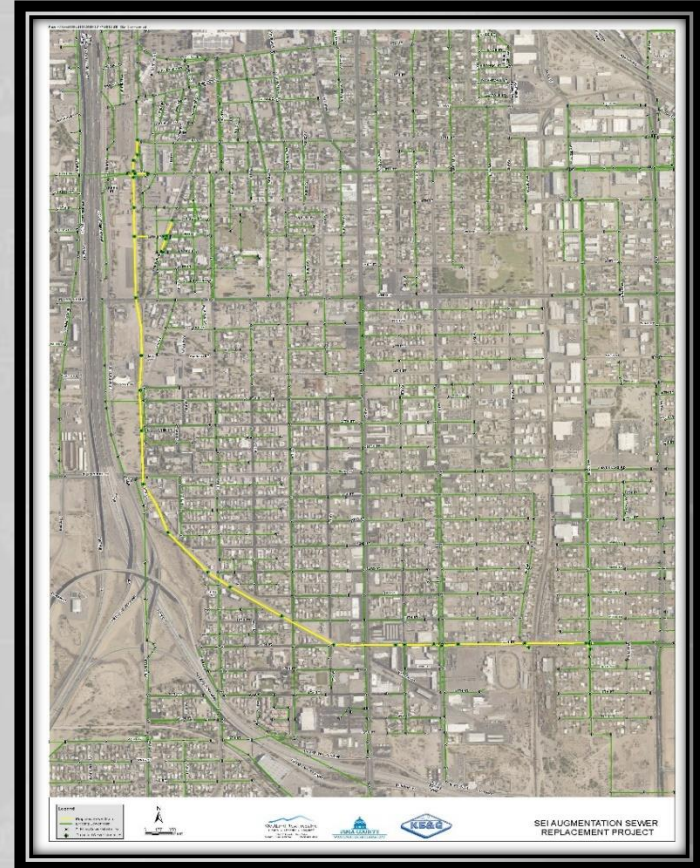
- 12,500+ LF of new sanitary sewer pipe, ranging from 30"- 48"
- 11 jack and bore tunneling sites
- 47 new manholes
- Mill and overlay paving along 36<sup>th</sup> St. from 6<sup>th</sup> Ave. to Euclid Ave.
- Greenway path from 25<sup>th</sup> St. to 36<sup>th</sup> St. along the new sewer alignment



# Why Install a New Sewer?

## Key Problems

- Existing Southeast Interceptor (SEI) installed in 1964
- 30"-36" Vitrified Clay Pipe (VCP)
- Still in good condition but nearing capacity and life expectancy
- New SEI allows for future expansion, including the Aerospace Corridor



# Business / Residence Impacts

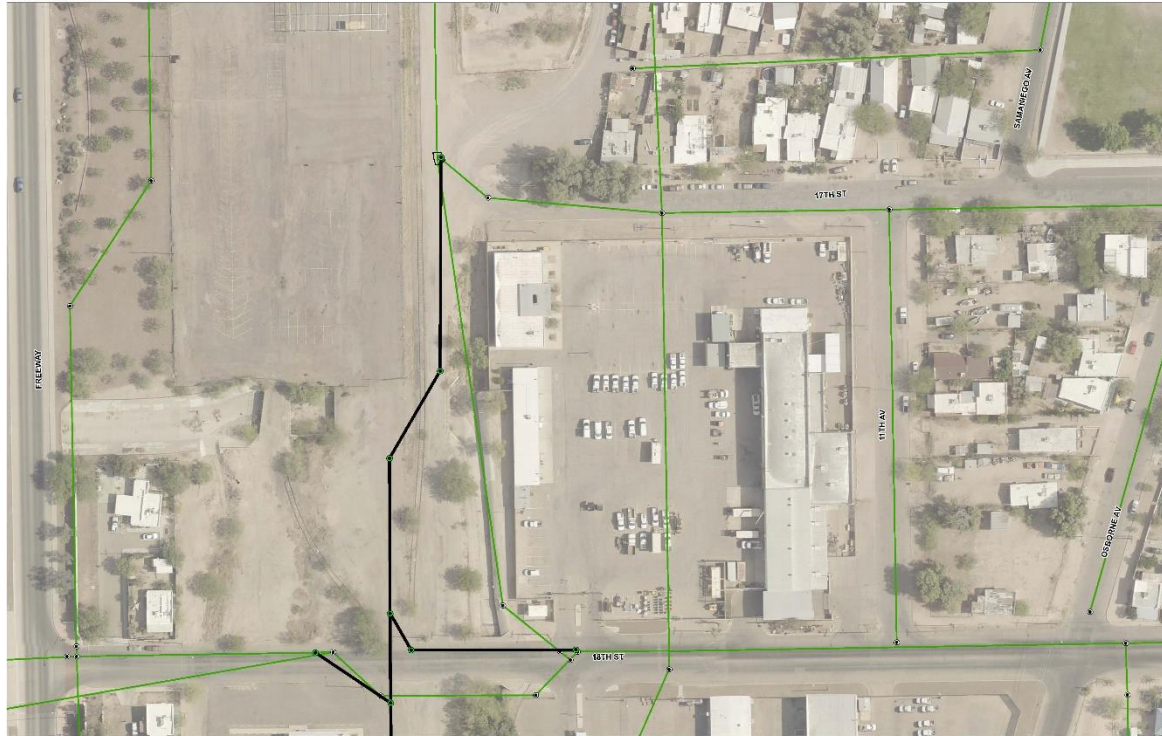
## What to look out for:

- Traffic Control (Day & Night Work)
- Construction Workers
- Heavy Equipment
- Material Storage (Pipe, Dirt Piles, etc.)
- Sanitary Sewer Bypass Pumping



# Business / Residence Impacts

## Heavily Impacted Area: 18<sup>th</sup> Street



Legend

- SEI AUGMENTATION SEWER REPLACEMENT PROJECT
- HEAVILY IMPACTED AREA
- EXISTING SEWER
- PROPOSED SEWER



SEI AUGMENTATION SEWER  
REPLACEMENT PROJECT

18<sup>th</sup> Street

# Business / Residence Impacts

## Heavily Impacted Area: 18<sup>th</sup> Street

- Complete closure of 18<sup>th</sup> St. between I-10 Frontage Rd. and 11<sup>th</sup> St.





# Business / Residence Impacts

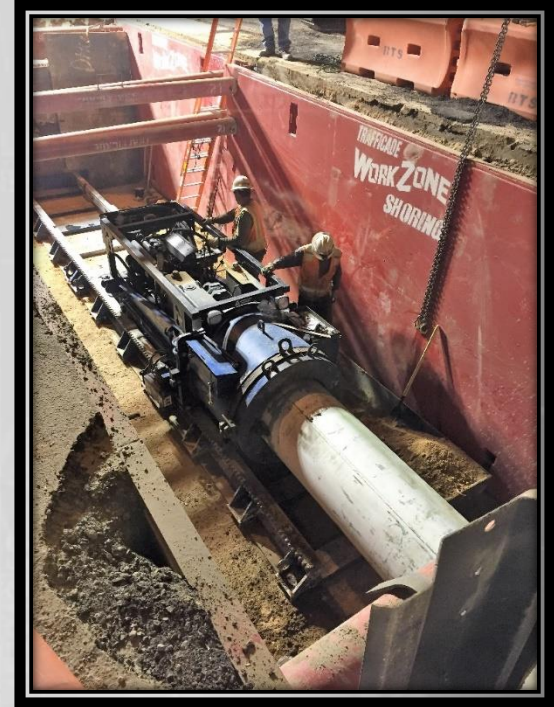
## Heavily Impacted Area: 22nd Street



# Business / Residence Impacts

## Heavily Impacted Area: 22<sup>nd</sup> Street

- Jack and bore tunneling underneath 22<sup>nd</sup> St. to reduce traffic and business impacts
- Use of pedestrian barriers and temporary fencing to keep public safe from vehicle traffic and construction work zone



# Business / Residence Impacts

## Heavily Impacted Area: 25<sup>th</sup> Street



Legend  
- - - - -  
- - - - -  
- - - - -  
- - - - -



SEI AUGMENTATION SEWER  
REPLACEMENT PROJECT  
25th Street

# Business / Residence Impacts

## Heavily Impacted Area: 25<sup>th</sup> Street

- Complete closure of 25<sup>th</sup> St. between I-10 Frontage Rd. and Osborne Ave./11<sup>th</sup> St.
- Jack and bore tunneling underneath 84" water main at 25<sup>th</sup> St.



EXISTING 54"Ø RCP  
INVERT EL = 2381.712381.87  
(PRIOR TO CIPP)

CONSTRUCTION

# Business / Residence Impacts

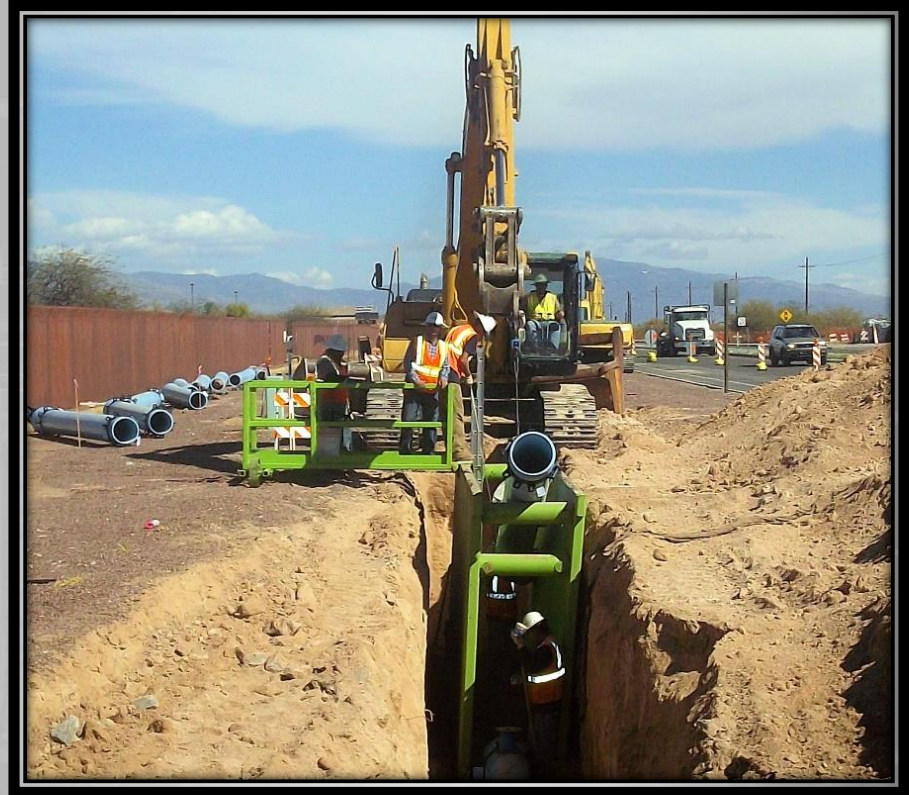
## Heavily Impacted Area: 29<sup>th</sup> Street



# Business / Residence Impacts

## Heavily Impacted Area: 29<sup>th</sup> Street

- Open trench excavation across 29<sup>th</sup> St. at 12<sup>th</sup> Ave.
- Lane shifts will take place to accommodate construction work zone
- Limited access to 12<sup>th</sup> Ave.



# Business / Residence Impacts

## Heavily Impacted Area: 10<sup>th</sup> Avenue



# Business / Residence Impacts

## Heavily Impacted Area: 10<sup>th</sup> Avenue

- Jack and bore tunneling underneath 10<sup>th</sup> Ave. to reduce traffic and business impacts
- Use of pedestrian barriers and temporary fencing to keep public safe from vehicle traffic and construction work zone





# Business / Residence Impacts

## Heavily Impacted Area: 8<sup>th</sup> Avenue



# Business / Residence Impacts

## Heavily Impacted Area: 8<sup>th</sup> Avenue

- Open trench excavation across 8<sup>th</sup> Ave. at 35<sup>th</sup> St.
- Complete closure of 8<sup>th</sup> Ave. between 34<sup>th</sup> St. and 36<sup>th</sup> St.



EXISTING 54"Ø RCP  
IN V. EL = 2381.712381.87  
(PRIOR TO CIPP)

CONSTRUCTION

# Business / Residence Impacts

## Heavily Impacted Area: 36<sup>th</sup> Street at 6<sup>th</sup> Avenue



Legend

- SEI AUGMENTATION SEWER REPLACEMENT PROJECT
- EXISTING SEWER
- EXISTING STREETS
- EXISTING UTILITIES



SEI AUGMENTATION SEWER  
REPLACEMENT PROJECT  
6th Avenue at 36th Street

# Business / Residence Impacts

## Heavily Impacted Area: 36<sup>th</sup> Street at 6<sup>th</sup> Avenue

- Jack and bore tunneling underneath 6<sup>th</sup> Ave. to reduce traffic and business impacts
- North and South bound lanes of 6<sup>th</sup> Ave. at 36<sup>th</sup> St. to remain open
- Complete closure of 36<sup>th</sup> St. between 7<sup>th</sup> Ave. and 5<sup>th</sup> Ave.
- Use of pedestrian barriers and temporary fencing to keep public safe from vehicle traffic and construction work zone



# Business / Residence Impacts

## Heavily Impacted Area: 36<sup>th</sup> Street at 4<sup>th</sup> Avenue



# Business / Residence Impacts

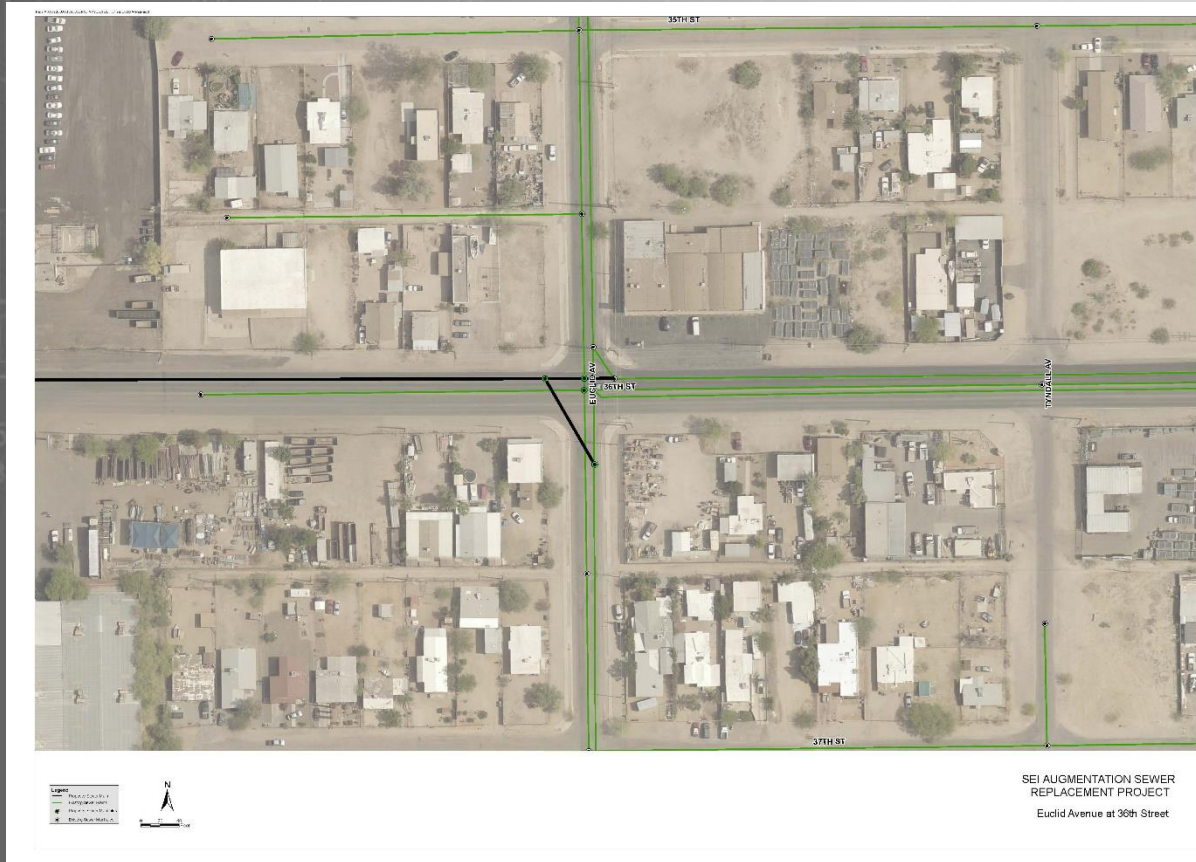
## Heavily Impacted Area: 36<sup>th</sup> Street at 4<sup>th</sup> Avenue

- Partial closure of the intersection at 36<sup>th</sup> St. and 4<sup>th</sup> Ave.
- Open trench excavation down 36<sup>th</sup> St. from 6<sup>th</sup> Ave. to Euclid Ave.



# Business / Residence Impacts

## Heavily Impacted Area: 36<sup>th</sup> Street at Euclid Avenue



# Business / Residence Impacts

## Heavily Impacted Area: 36<sup>th</sup> Street at Euclid Avenue

- Complete closure of the intersection at 36<sup>th</sup> St. and Euclid Ave.





# Business / Resident Notification



## Pre-Construction Open House / Casa abierta de antes de la construcción Southeast Interceptor Sewer Augmentation

Wednesday, April 27, 2016

5:30-6:30 PM

(There will be a brief presentation  
at 5:45 PM)

Riverpark Inn

777 W. Cushing Street

[www.sewerimprovements.info](http://www.sewerimprovements.info)  
(520) 622-2527



PIMA COUNTY  
WASTEWATER RECLAMATION  
Regional Wastewater  
Reclamation Department  
c/o 110 S. Church Avenue  
Suite 3350  
Tucson, AZ 85701-7617

# Future Meeting/Open House

## Traffic Safety Meeting

- Meeting with public safety departments to review street closures and work zone access in the event of an emergency

## Construction Segment 2 Open House

- Open house for Construction Segment 2 (29<sup>th</sup> St. and 12<sup>th</sup> Ave. to 36<sup>th</sup> St. and Euclid Ave.)

# Contact Information

- Construction Updates: [www.sewerimprovements.info](http://www.sewerimprovements.info)
- To contact Kathy or Kristi:
  - By email at [info@sewerimprovements.info](mailto:info@sewerimprovements.info)
  - By phone at (520) 622-2527



**KANEEN**

Advertising &  
**Public Relations** Inc.



**WestLand Resources, Inc.**  
Engineering and Environmental Consultants



**PIMA COUNTY**